

Report Overview of emergency ambulance patient pathway performance, NHS West Norfolk, April to November 2014

Client Kathryn Ellis, NHS West Norfolk CCG

Author Rob Holmes, Performance Manager, robert.holmes@nelcsu.nhs.uk, 01603 595 851

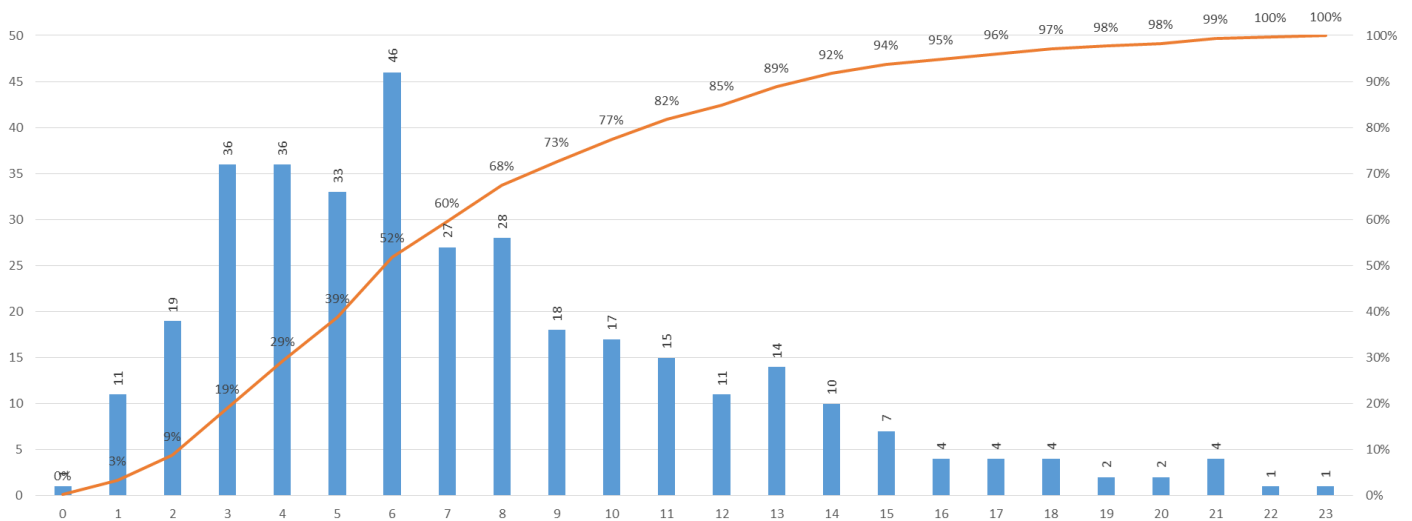
Data source East of England Ambulance Service Trust (EEAST) minimum data set

Published 20th January 2015

1. Time from call to first response on scene

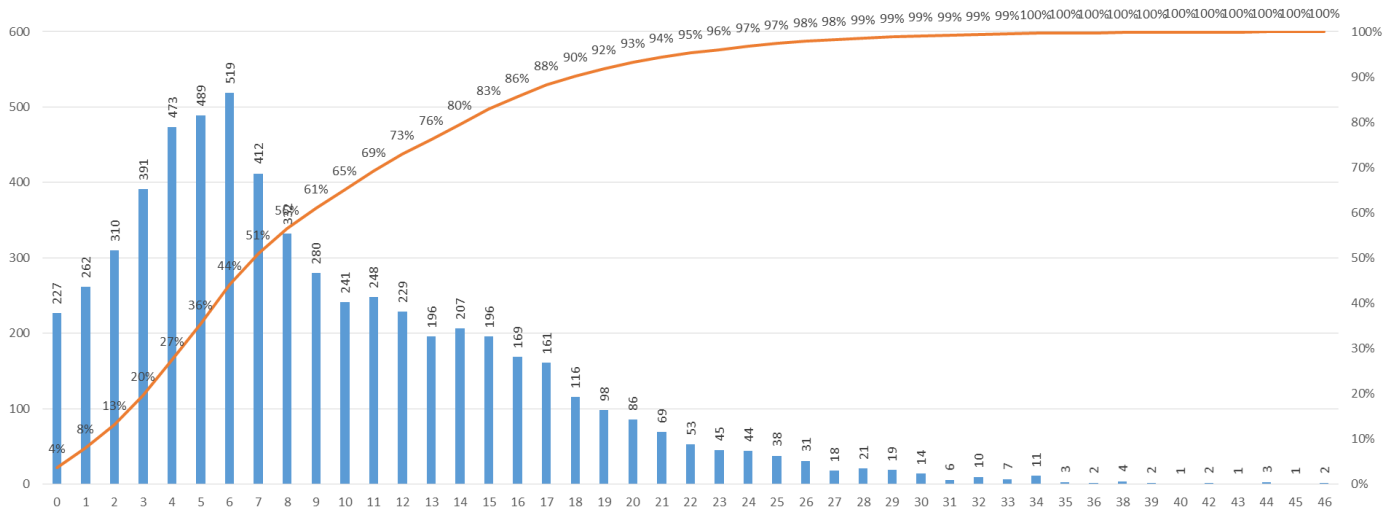
Red 1 activity

East of England Ambulance Service Trust (EEAST) Responses in minute bands from time of initial call to first unit on scene with cumulative percentage of activity seen
NHS West Norfolk, April to November 2014, Response Category: R1



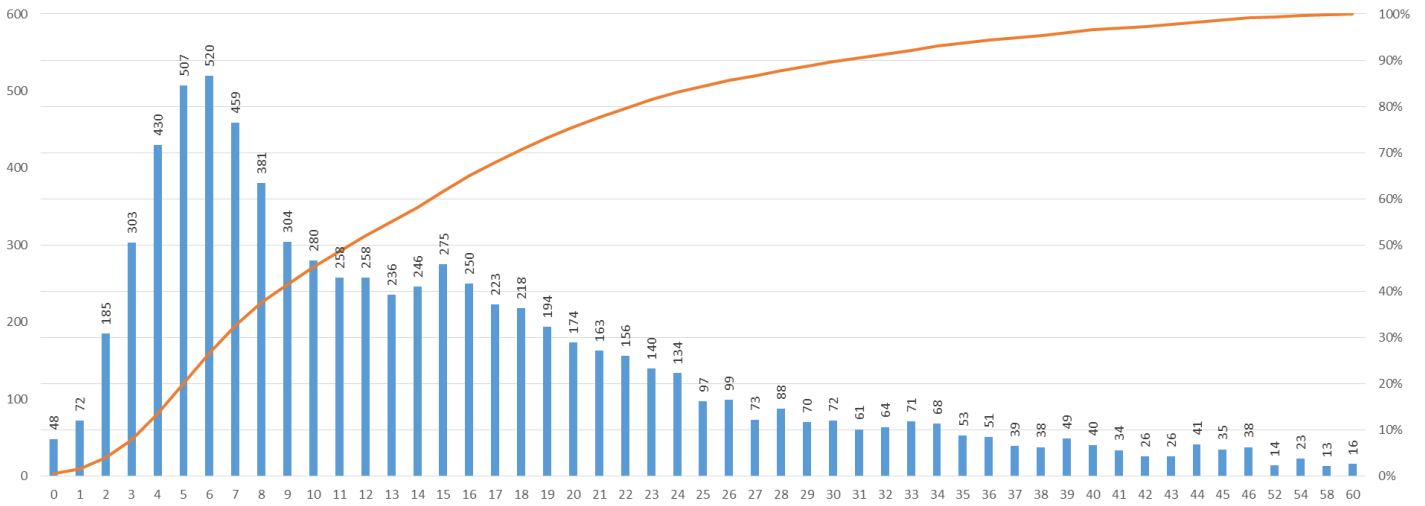
Red 2 activity

East of England Ambulance Service Trust (EEAST) Responses in minute bands from time of initial call to first unit on scene with cumulative percentage of activity seen
NHS West Norfolk, April to November 2014, Response Category: R2



Green 1-4 activity

East of England Ambulance Service Trust (EEAST) Responses in minute bands from time of initial call to first unit on scene with cumulative percentage of activity seen
 NHS West Norfolk, April to November 2014, Response Category: G1-4



2. Ambulance first response type

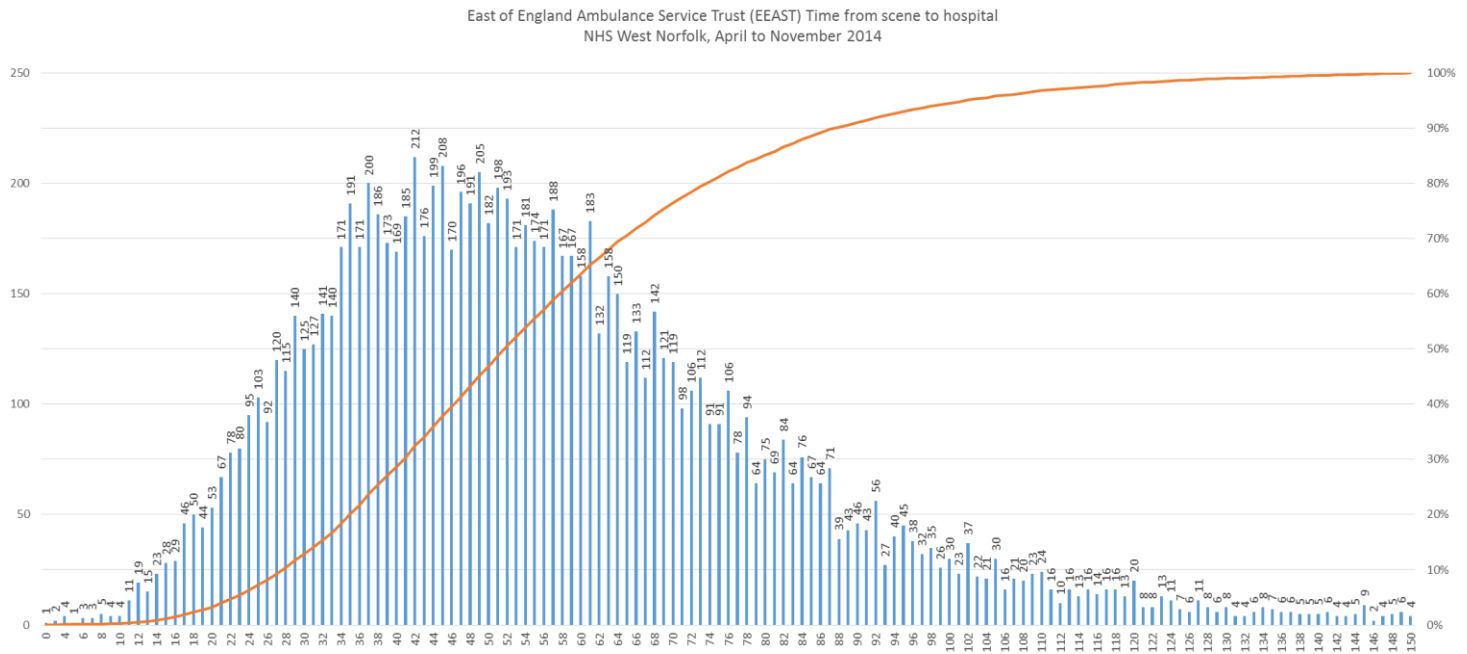
At the present time it is not possible to derive response type from the ambulance minimum data set.

NELCSU recommendation

That the commissioner reviews the emergency ambulance minimum data set specification in conjunction with the lead commissioner / EoE ambulance consortium to identify what additional data is required to provide this intelligence, and the contractual opportunities to access this information.

3. Transportation time from scene to hospital

From the point at which transporting vehicle arrives at scene if different from initial response resource e.g. community first responder to arrival at hospital site.



4. Arrival-to-handover time at hospital

From the point at which the ambulance arrives at the hospital site to the clinical handover of patient care to the acute trust.

