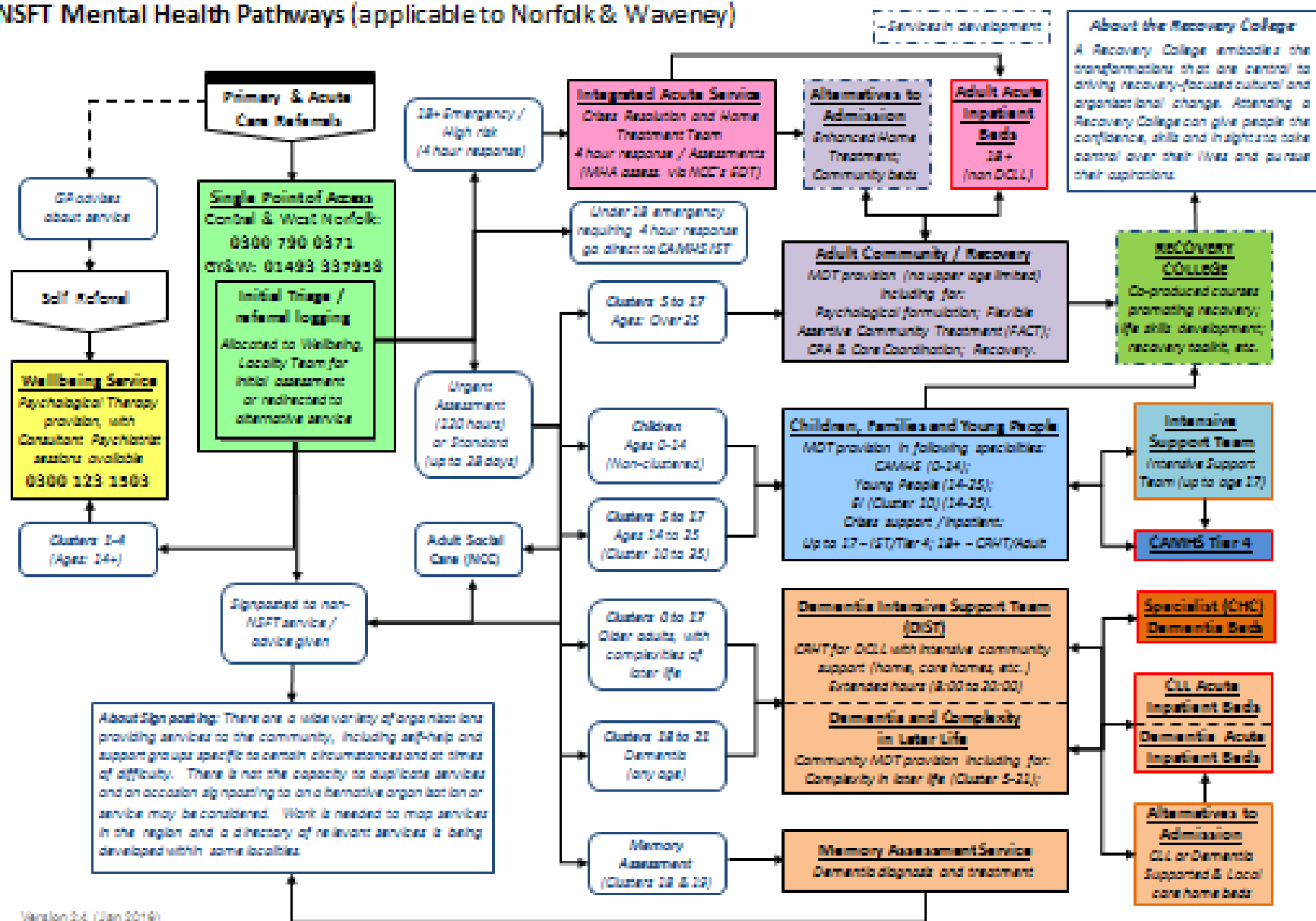


# Transforming Adult Mental Health Care in West Norfolk

Tuesday 25<sup>th</sup> July 2017

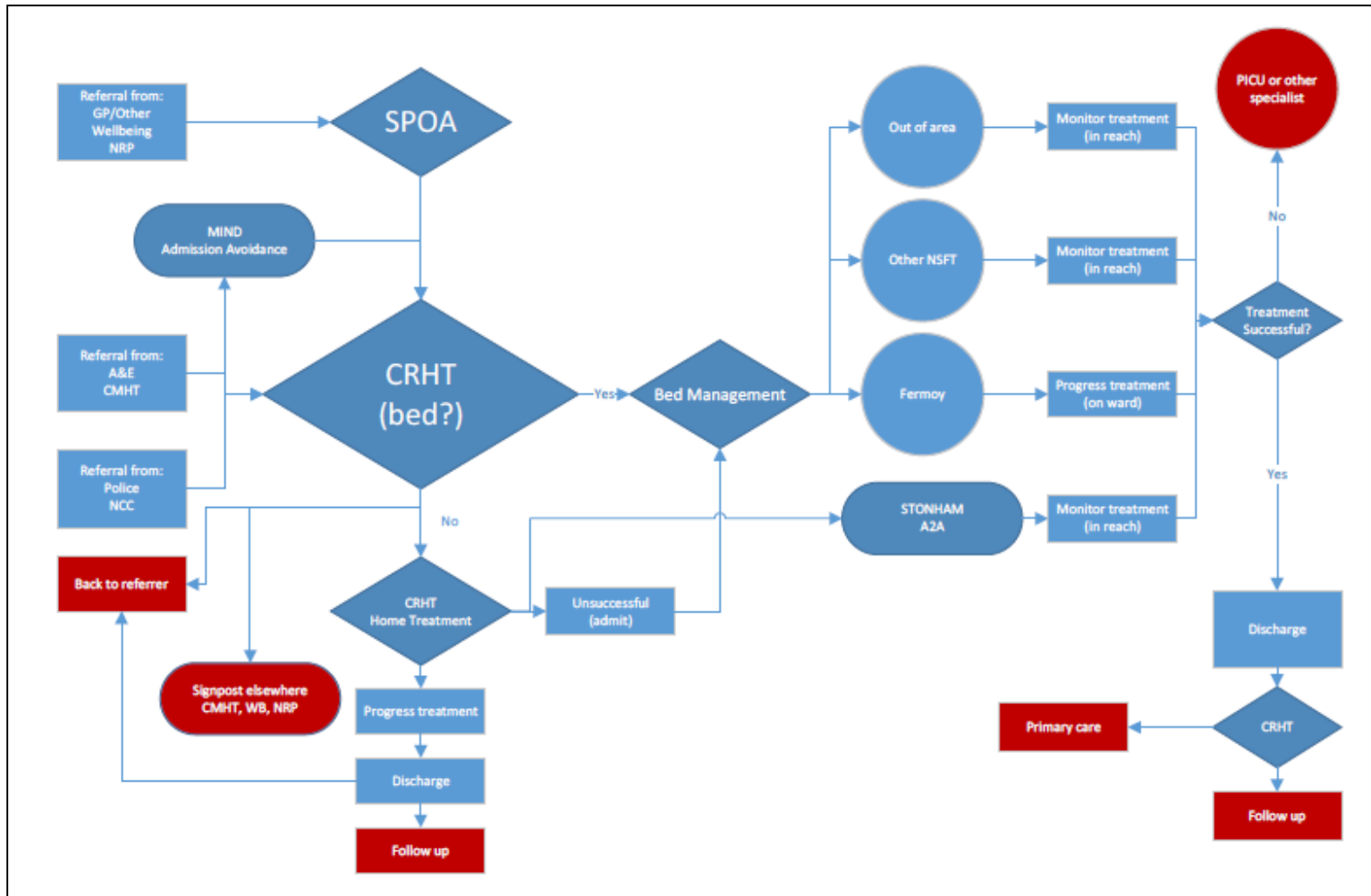
# NSFT Mental Health Pathways (applicable to Norfolk & Waveney)



# Clinical Model Review

- Integrated Acute services
- Bed and Capacity Review
- Alternative to admission options
- Third Sector partners

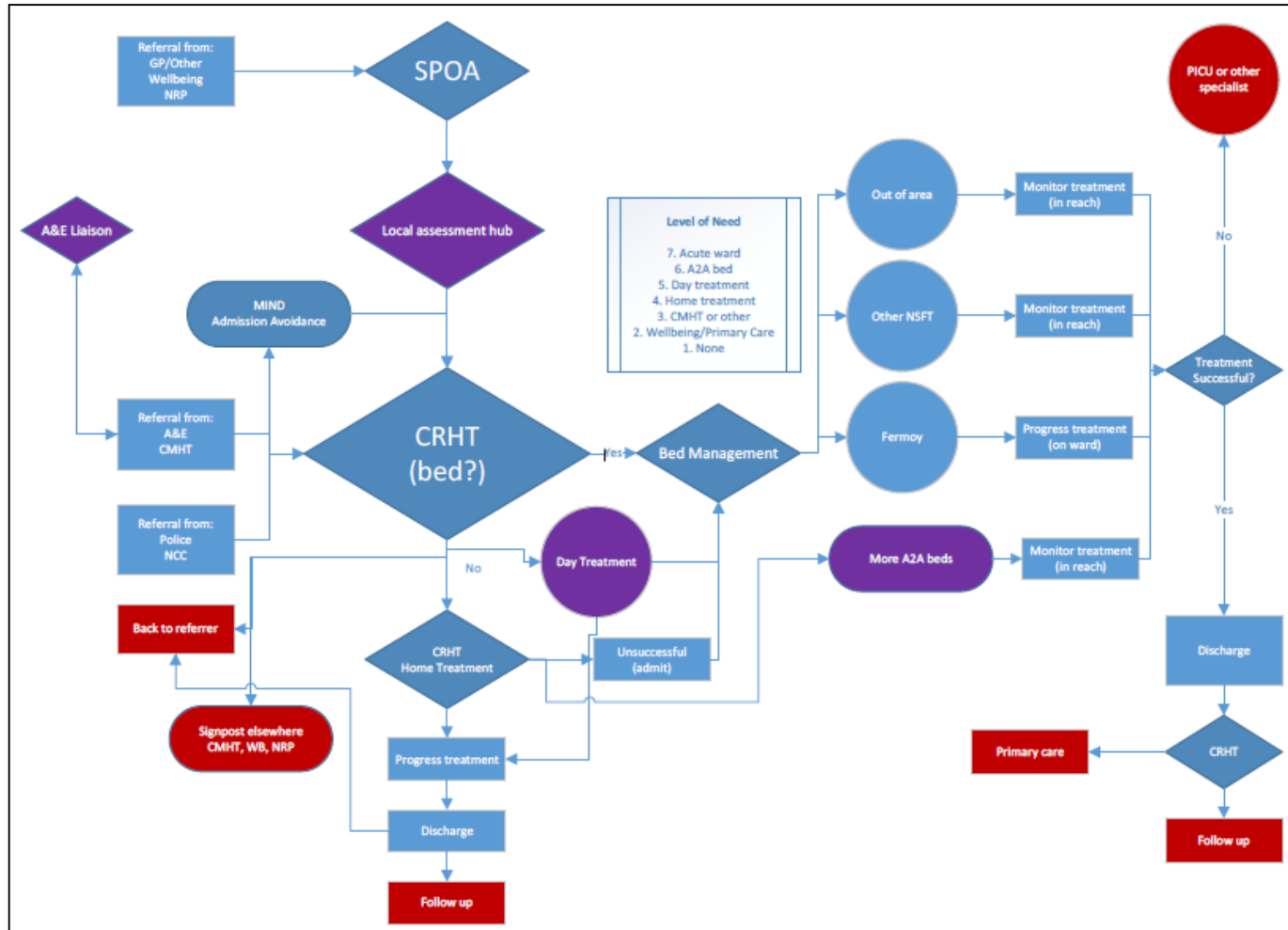
# Current Model



## Development Areas

- An improved A&E Liaison Service at QEH
- A local integrated assessment hub
- Acute day treatment service
- Further access to alternative to admission (A2A) services

# Possible Future Model



## Development Areas

- Clinical model developments will not necessarily coincide with the Chatterton House development
- If improvements can be made earlier within the existing pathway, they will be.





## West Norfolk Transformation

- £4m funding secured by Norfolk and Waveney STP through joint funding bid by NSFT and West Norfolk CCG.

# Estate changes

- Consolidate estate on the Chatterton House campus
- Refurbish Tennyson and Chase wards and build link area
- Transfer from the Fermoy Unit at QEH to Chatterton House



# Summary

- Plans well advanced (planning permission to be submitted July 2017) for structural changes and draft internal floor plans
- Building to commence December 2017
- Building completion due November 2018
- Plan to open new building January 2019

Thank you for your time

Questions?