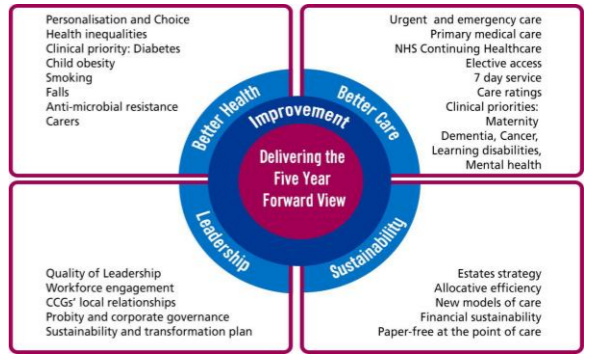


<b>West Norfolk CCG Assurance Framework</b>	<b>West Norfolk CCG Strategic Objectives</b>
<b>10/08/2017</b>	1. To ensure the needs of the people of West Norfolk and clinical quality are at the heart of everything we do
<b>Lead : Head of Corporate Affairs</b>	2. To lead the long term sustainability of health & care services for the people of West Norfolk
	3. To collaborate in partnerships that promote and deliver demonstrable improvements in the health & wellbeing of the people of West Norfolk
	4. To meet statutory financial duties
	5. To be innovative and to use integration as a means to deliver improvements in care
	6. To ensure that the resources and capability are made available to commission services efficiently and effectively

Status Change
→ - same
↑ - increased
↓ - decreased

<b>RISK MATRIX:</b>	<b>Likelihood</b>				
	1 – Rare	2 – Unlikely	3 – Possible	4 – Likely	5 – Almost Certain
Consequence					
1 - Negligible	1	2	3	4	5
2 - Minor	2	4	6	8	10
3 - Moderate	3	6	9	12	15
4 - Major	4	8	12	16	20
5 - Catastrophic	5	10	15	20	25



Strategic Objective	CCG Improvement and Assessment Framework	Ref	Risk Description (and implication)	Inherent Risk Rating (LxC)	Existing Controls (measures in place to reduce likelihood)	Assurances on Control	Current Risk Rating (LxC)	Target Risk Rating (LxC)	Date to achieve Target Risk	Date Risk Added	Date Risk Updated	Gap in Controls/Assurance	Action plan and Progress Report	Date to Complete Action(s)	Committee	Lead
5. To be innovative and to use integration as a means to	Leadership/Sustainability	5.2	There is a risk that we do not have sustainable Primary Care practices in West Norfolk	4 x 4 = 16 (R)	Support for practices undertaking CQC assessment Development of West Norfolk Health as primary care at scale organisation Close relationships with CCG and individual practices.	<b>Internal:</b> CCG engagement with West Norfolk Health meetings <b>External:</b> Primary Care Commissioning Committee	3 x 4 = 12 (A) →	2 x 2 = 4 (Y)	31/03/2019	15/11/2016	13/09/2017	West Norfolk Health has limited organisation maturity at present.	1. West Norfolk Health have developed a governance structure that has been supported by the CCG SMT. F&P to review. 2. Implementation of structure 3. Workforce development plan (STP wide) 4. GPFV implementation in line with release of funding	30/09/2017 31/10/2017 30/09/2017 On-going	PCCC	RC